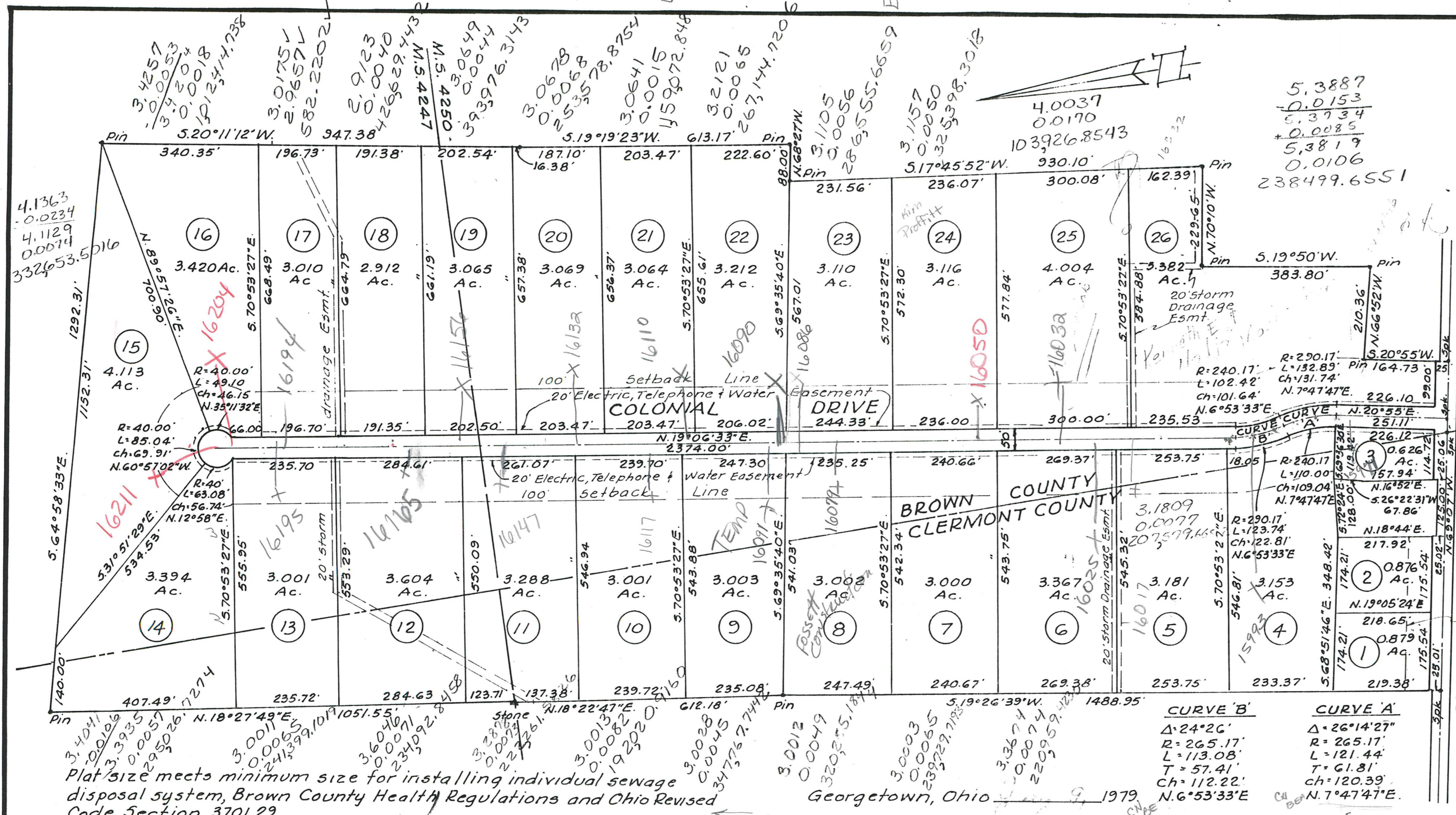


Length of Road
2859.63'



Approved _____, 1979
 Clermont County Planning Commission.
 Executive Director

Approved _____, 1979.
 Clermont County Engineer.
 County Engineer

We, the undersigned, Commissioners of Clermont County, Ohio do hereby approve this plat and do authorize the Recorder of Clermont County, Ohio to file this plat for record

We specifically reserve our acceptance of Clancy Greenbush Road shown hereon as a public roadway until such time as it has been constructed in accordance with the Clermont County Specifications and Approval by the County Engineer.

Attest: _____
 Clerk
 Plat No. 629-847
 0.8788
 0.0042
 174002.9553
 188,434.3328
 Clermont County Commissioners

Plat size meets minimum size for installing individual sewage disposal system, Brown County Health Regulations and Ohio Revised Code Section 3701.29

Keith Moore
 Brown County, Ohio Board of Health

We, the undersigned, Commissioners of Brown County, Ohio do hereby approve this plat of Williamsburg Estates and authorize the recorder of Brown County, Ohio, to file the plat for record.

We specifically reserve our acceptance of all streets and/or roads in said subdivision as public streets and/or roads until such time as they have been approved by the County Engineer.

Attest: _____
 Clerk
 Plat No Assigned _____
 Brown County Commissioners

Property conveyed to Smith Real Estate Corporation and recorded in Deed Book 605 Page 561 in the Clermont County Recorders Office and Volume 175, Page 673 in the Brown County Recorders Office.

Iron Pins are set on all lot corners unless otherwise noted.

I, hereby certify that this map is a true and complete Survey made by me in April, 1979 and that all Monuments are set as shown.

Jimmy Lansdale
 Registered Surveyor No. 5-5611

I, hereby approve this general layout of Williamsburg Estates as shown on this plat.

William R. Ellis
 Brown County Engineer

Lot No.	Area in Clermont Co.	Area in Brown Co.
3	0.457 Ac.	0.169 Ac.
4	2.799 Ac.	0.354 Ac.
5	2.825 Ac.	0.356 Ac.
6	2.736 Ac.	0.631 Ac.
7	2.224 Ac.	0.776 Ac.
8	2.088 Ac.	0.914 Ac.
9	1.808 Ac.	1.195 Ac.
10	1.656 Ac.	1.345 Ac.
11	1.579 Ac.	1.709 Ac.
12	1.453 Ac.	2.151 Ac.
13	1.015 Ac.	1.986 Ac.
14	1.310 Ac.	2.084 Ac.

WILLIAMSBURG ESTATES

WILLIAM LYTLE SURVEYS 4247 & 4250

STERLING TOWNSHIP
 BROWN COUNTY, OHIO

WILLIAMSBURG TOWNSHIP
 CLERMONT COUNTY, OHIO

APPROVED
 DATE 10/25/79
 BY [Signature]
 COUNTY ENGINEER
 BROWN COUNTY OH

TRANSFERRED 10-25-79
 DALLAS D. HURT
 BROWN COUNTY AUDITOR
 FEE _____



Jimmy Lansdale-Surveyors
 P.O. Box 44276
 Cincinnati Ohio 45244

WILLIAMSBURG ESTATES

Scale 1"=200' May, 1979
 Sheet 1 of 2

Sheet 3

2740

5/134 & 135

Sheet 4